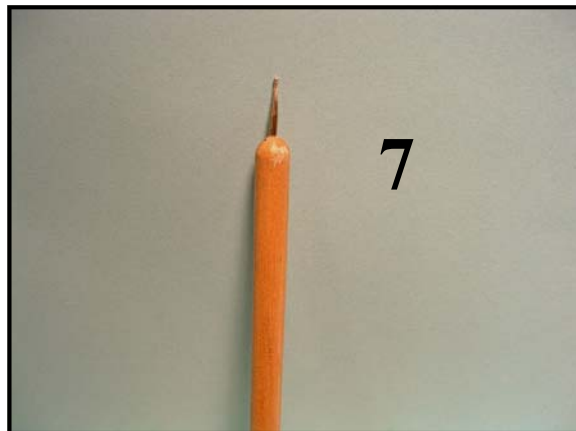
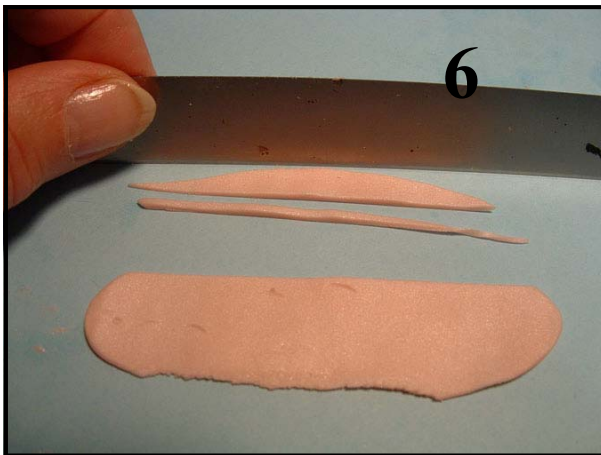
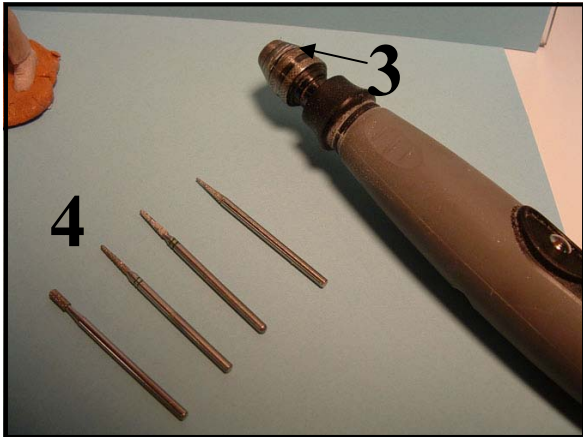
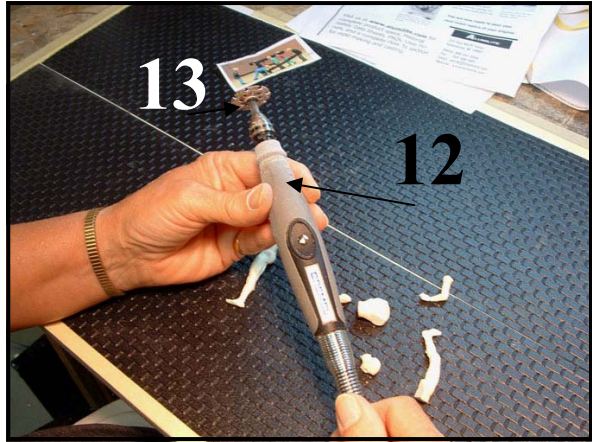
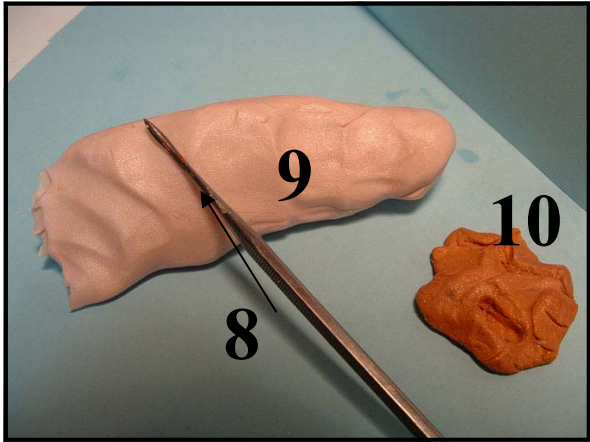


How to make original people scale 1/24

by Julie Barber

The following is a list of materials you should have on hand before you begin....





1– A selection of drill bits, I was lucky enough to be given these by a member of our club but I am sure you could buy these from a dental outlet. I use these extensively for sanding and refining my figurine after it is baked of course. You need several sizes focusing on the smallest and finest ones.

2– This magnifying tool is invaluable when working with miniatures. You can use it over your regular glasses. Works ! Available at some hobby shops or :www.potomacdisplay.com
Order # S-MH1042C approx price 16.96 US

3-Universal chuck This is invaluable when using a “Dremel” tool. # 4486 chuck available from “Home Depot or Lowes or any other larger hardware stores. Allows you to change bits without having to use the wrench each time!

4– This photograph shows you my preferred grinding and sanding bits you can get some of these from Home Depot but I prefer using dental tools

5– A piece of metal rod, I use this to roll out my “Fimo” or “Sculpey”

6-cutting blade to cut the “Fimo” available from “Michaels” nominal price

7-Burnishing tool available from “Michaels” nominal price

8-this is my preferred dental pick for carving the “Fimo” These picks are available from Model Builders Supply see # 21-22-23 on list of materials in article entitled “How to make molds and figurines” on this web site

9-“Fimo” widely available at Michaels or any good hobby shop approx 4.00 each

10– Kleen Klay available from www.modelbuilderssupply.com 1 lb. approx 5.50 order # KK1

11a and 11b—An assortment of already cast body parts Instructions are in “how to make molds and figurines. (On this web site) Use the same method but you are casting body parts instead of complete figurines.

12– a must have tool! The “Dremel” Rotary tool available from Hope Depot or any other larger hardware store. Several model are available. Prices range from \$50 on up **I would suggest you get the “Flex Shaft” attachment # 225-01. It will fit any Dremel tool.** Available from Hope Depot. This allows you to use the Dremel like a pencil instead of holding the tool itself in your hand.

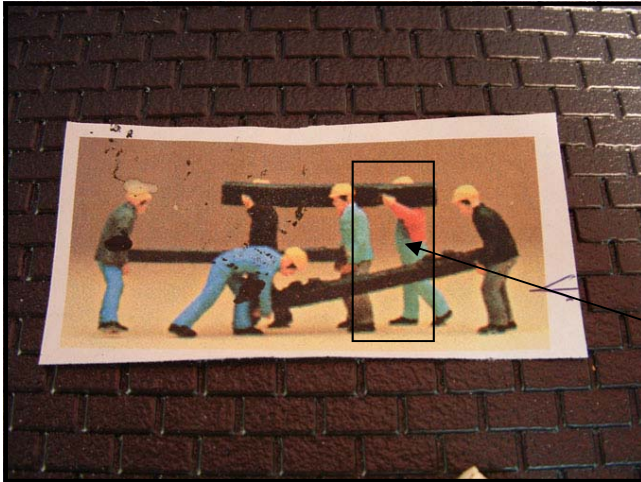
13-cutting wheel # 543 for “Dremel” available from Hope depot or any other larger hardware store approx 20.00 This is the greatest cutting wheel I have found!

14– Milliput 2 part epoxy putty used to fill in gaps in your figurine before covering with Fimo available from www.modelbuilderssupply.com Order # MEP-1 approx. 9.35

please read the whole article before you begin...

Let's begin.....

I would like to emphasize that this is my method of making original people. There are several methods of doing so but I taught myself and think that this is the simplest way and fastest way of doing it. Also because you are not carving faces, a lot of time is saved....Just remember the first one might not be what you had hoped for but with each one you make you will be getting better at it....It is rewarding to do and a nice winter project.... Waiting for the snow to melt until you can run trains again!

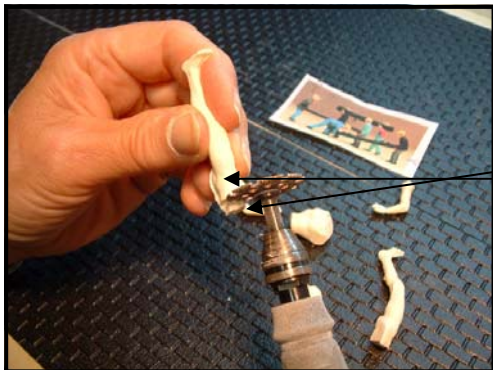


Get a picture of a figurine you would like to make or select a photo of a real person to copy.

I was asked by my husband to duplicate this fellow

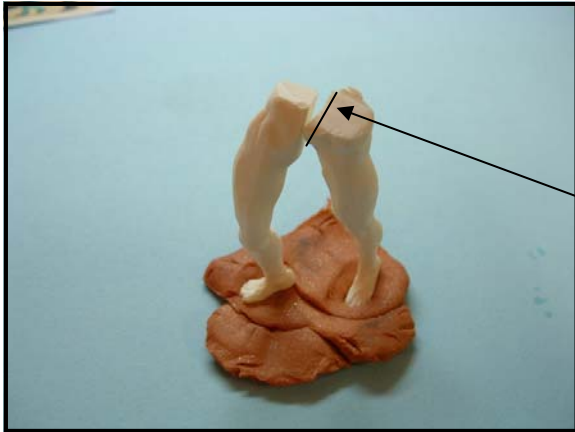


When selecting keep in mind what position you want the legs and arms etc.... Try and select the parts that will more closely fit your figurine. You will adjust these parts later if you have to, in other words you might have to break an arm at the elbow or a leg at the knee to make the body part look right. In this case the left leg is just bent enough to show the man is walking.



With your cutting wheel attached to the "Dremel" tool cut off any surplus flashing as shown.

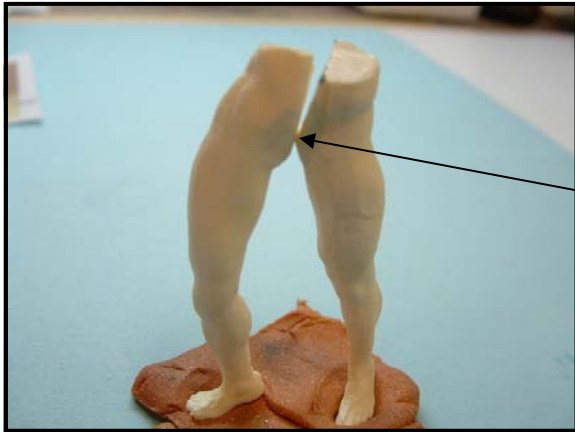
Smaller bits of flashing can be removed with your exacto knife
Your body parts must be clean of any surplus before you glue them together.



Take a piece of Kleen Klay and put it on your work surface. The Klay allows you to put your figurine in the Klay stopping it from moving and leaving your hands free to work.

Take the two legs and imbed them in the right position. Try and determine how much you will have to cut off to make the two legs fit together at the top.

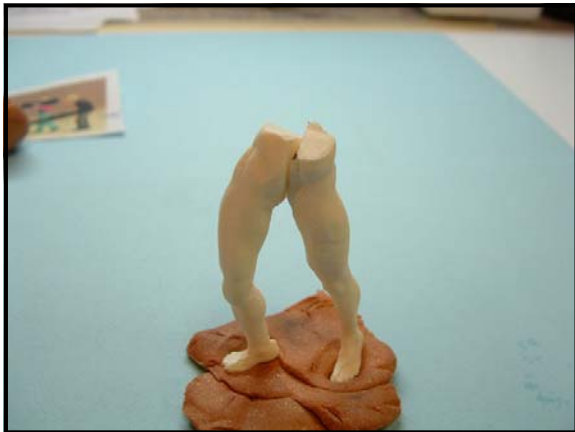
I figure about this much (as indicated by the line) Cut this excess off with your Dremel.



As you can see it still doesn't fit properly, you must have more surface of each leg touching each other to be able to glue it properly.

Cut this part off.

Fit again.



Now it fits. So go ahead and glue it in place using Zap-a-Gap glue and accelerator.



The top of the legs portion here has to be flat in order for you to do the next step gluing the torso on, so you must remove this part so that the surface of both legs is equal in height and even.

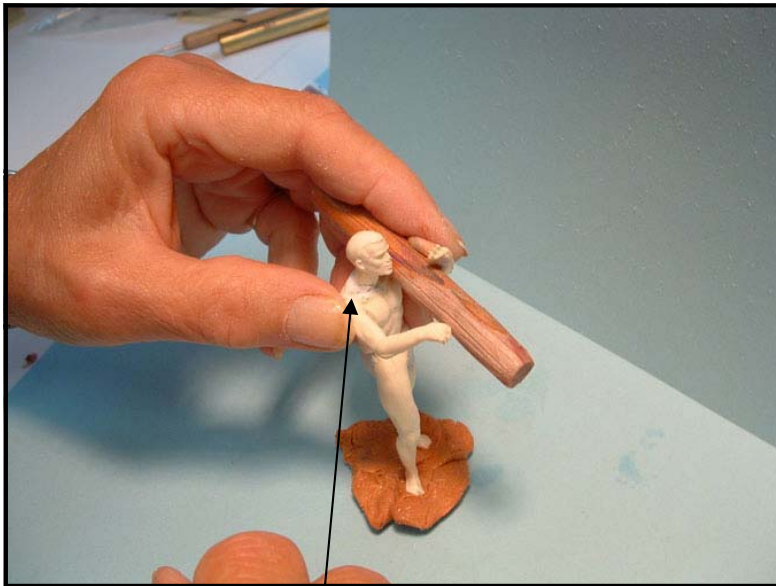
Do that and keep adjusting until the surface is even.



Torso fits as you can see so glue it in place.



Try the head on and glue it in place.



Add a drop of glue here and glue the right arm in place. Watch your fingers!

Place the left arm in position. I expect this man to be able to carry a log, so I made a log with Fimo, simply make a roll the right size, (Make sure the length is to scale) carve it a little to mimic wood, then bake it 275 in a toaster oven. Let it cool completely. Now you can place it on the man's shoulder and use Klay to hold it together (temporarily) to see if it looks good. Make sure you have enough space showing so you can add a drop of glue. Use the accelerator, remove the Klay and glue in place properly.



Epoxy is packaged in 2 small rolls, one white and one light blue.

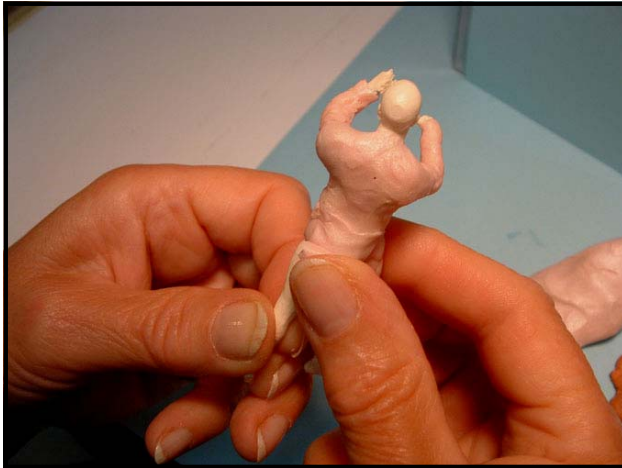
Because you have manipulated the legs to fit you might find that the “Bum” part is not right. If that’s the case, simply take equal amounts of Milliput and knead them in your fingers until it is an even color. If you don’t mix it enough it will not harden. Apply this epoxy where it is needed and check that it looks real. The shape should imitate a real man. It is not crucial to have this perfect since you will be putting clothes on the man but it will make your next step a lot easier



Do the same thing for the front...and anywhere else it might be needed to fill in gaps. Let this dry overnight.... Epoxy will get rock hard!



Start covering the man with Fimo, always start at the top, at the neck. Use a thinner coat but not too thin. You will be sanding later so it cannot be too thin because as soon as the Dremel hits the area some of the fimo will fly off. It should be about 1/8” thick.....

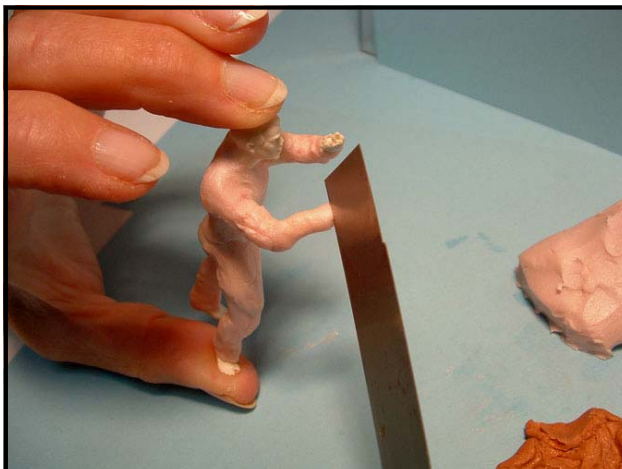


With the Klay cover the man completely with “Fimo”
Try to put a thin covering of Fimo. You should have enough on so that later on you can make creases in the arms at the elbows to show natural creases in his shirt or pants....Try and shape the Fimo around the legs to look like pant legs.



Hold the man in your hand this way and use your palette knife to smooth on, it works better than your fingers. Your fingers will make the Fimo too soft....Keep the palette knife clean because Fimo will bond to Fimo so if there is Fimo on your knife you will have trouble when applying....Make it as smooth as you can and notice I haven't put too much on. If you do your man will look like his clothes are too big for him. It will disturb the “scale”, and you will have to sand too much. It pays to be patient and do it right!

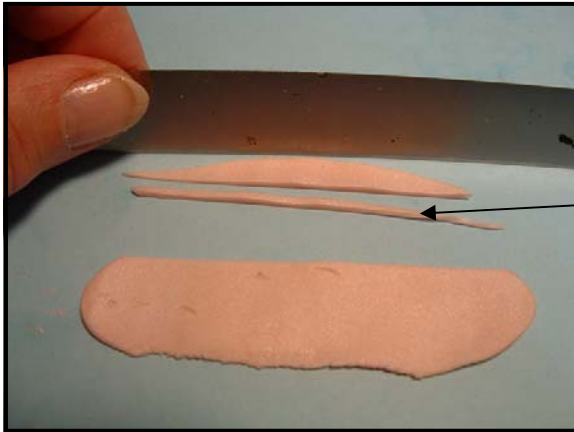
Always check the proportions are right. The more accurate you are the less sanding and removal you will have to do....



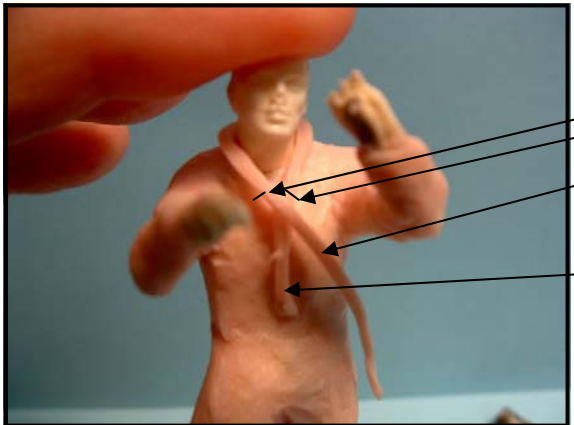
Use your cutting blade to slice off the ends of his sleeves and pants with a nice clean cut



With your metal rod roll out a piece of Klay to a thin thickness just thick enough for you to cut in strips and pick up with your exacto knife.



With your cutting blade, cut off strips as indicated



Cut the angles like this for the collar.

Remove this part which is excess....

Leave this part on which becomes the placket of the shirt



Using the point of your burnishing tool make buttons on the placket, just press the point in the Klay making buttons.



Cut a strip of Fimo and put it around the waist for his belt



Take the narrow end of a palette knife and make creases in the arms and legs indicating where there are folds in the fabric.

Don't forget to put some in the front of the man too!

The clothes will not be perfect refining them is a step down the road.....



Frontal view

Remove man from Klay by the head so that you don't disturb the Fimo, and put it in your toaster oven which has been preheated to 275. Bake for 145 minutes. Remove very carefully. If you use Zap-a Gap glue it will become a little soft in the oven so sometimes it is better to open the door of the oven, turn the heat off and let it cool completely before you remove it. Let it sit overnight to cure a bit.



This step is crucial. With your Dremel fitted with a small diamond sanding bit refine your man, taking off any excess where it is not needed. Keep in mind that you will be painting it so every tiny detail will show! Sand the belt and collar to the right thickness and width.

Intensify the folds in the clothes. In other words, this is where you learn how to carve. Be careful! Remove only a little bit at a time. Take your time!



Because your man is now hardened after being baked you can do the following:

Add a coat and a hard hat using Fimo. My man is working in a pulp mill so he needs the protection! Use a photo of a man wearing a coat and hard hat if it makes your job easier!

Of course if you don't want to put a hat or coat on, leave it off!

Once you are satisfied with the coat and hat, bake him again at 275 for 15 minutes, open the door, turn the heat off, and let him cool

Again, using your Dremel, refine your man's coat and hat. Be very careful if you make a mistake and more comes off than you want you will have to add more Fimo, bake again, cool again and try again to sand and get it exactly the way you want it.



Note: every time you add something to your man, you must bake, cool, sand.

I want a pair of construction boots on him, so I cut the pants off higher with my exacto knife and put some boots on him. I will also add gloves!

Bake, cool, sand the boots and gloves as previously done with the clothes.....

Note: I find the shoes or boots are the most difficult to make, they always go on last! Most people make them too big! They must be in proportion to the man or they won't look good....



Inspect your figurine with your magnifying glasses on, you will be able to see any defect much clearly! Sand with your magnifying glasses on. This step is getting him ready to accept the paint. He will look professional if you take your time and do this right!

Here he is ready to be painted.....

A note on painting

When I paint figurines, I use the dry brush method and negative painting. That means that I cover the whole figurine in black paint first. I then use a dry brush and apply the colors in thin coats. If you use this method your figurine will look a lot more real!

When the time comes to retouch the paint after a couple of years in the outdoors, simply put another coat of paint using the same method. Of course, you don't have to paint the whole figurine black all over again, just add another coat of color using the dry brush method. **I always use flat latex paint.**



Paint the figurine completely in a flat black paint. **Do not use too much paint.** Always take excess paint off the brush by dabbing it on a paper towel before applying the paint.

The figurine has been painted completely in black.

Painting the face

When painting the face start by painting the skin, with the dry brush method. (explained on page 15). When you are satisfied with the intensity of the color, let it dry thoroughly.

Next comes the eyebrows and eyes and mouth. You must use your magnifying glasses to do this.

eyebrows

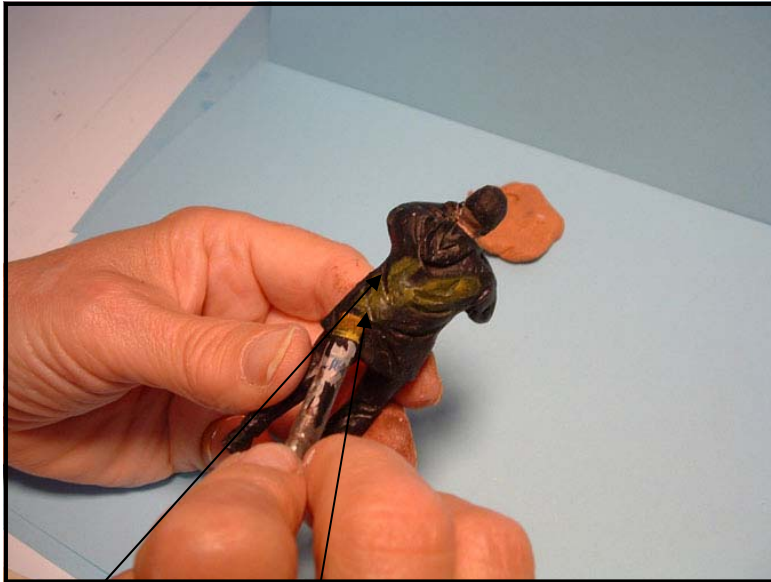
Using the smallest tip brush you can find, dip your brush in brown paint **Take the excess off on a paper towel! With one stroke paint the eyebrow.** If you mess up paint it skin color again, let it dry and try again!

eyes

Always start by painting the white of the eye first. Dip a rounded end brush(very small brush) in white paint, **take the excess off on a paper towel** and paint the eye socket white. Let it dry completely. Next: using the same brush take your choice of color for the eyes and put a dot in for the eyes. Let them dry completely. If you don't like them or the placement is wrong, simply paint white over them, let dry, and try again.....

mouth

Use a very small brush for the lips!
For ladies I just use a red or pink color for the lips. For men I apply brown first for the mouth and then I apply a thin line of red for the inside of the mouth. It looks more realistic!



With a flat end brush, start applying color..... Dip brush in paint, take excess off on a paper towel. Your brush must have only a small amount of paint, if you have too much paint it will not work properly. Apply the paint with the flat side of the brush against the surface you wish to paint. **This will allow you to paint but the paint will not get in the creases!**

See how the paint here has gone in the crease? That's wrong! It should look like this! The idea is to paint the coat in this case but leave the creases black so that it shows the depth of the crease.....When you use this method of painting, the paint dries very fast so you can keep applying coats. Just start at the back let's say and finish at the front. When you have completely covered the coat with one coat, start again at the back again with the second coat and finish at the front. Keep doing this until you have sufficient paint on the figurine and it looks good to you.



In my opinion, I think the figurine has been painted with the right amount of paint.



Paint the pants, boots and gloves
in the same manner



In this case I have glued the log in
place.....I used Zap-a-Gap glue of
course and the accelerator.

You can do this too! Once you've learned how to make molds for body parts in the previous articles on this web site, you will be able to use this method of making any figure you like doing anything you would like them to do. It is very satisfying and my husband is very grateful I taught myself how to do this!



You are looking at him inches away but when you see him 5 or 6 feet away he will even look better!

Please try and do it. You might surprise yourself and realize it is not as complicated as it looks!

Good luck!

The completed figurine